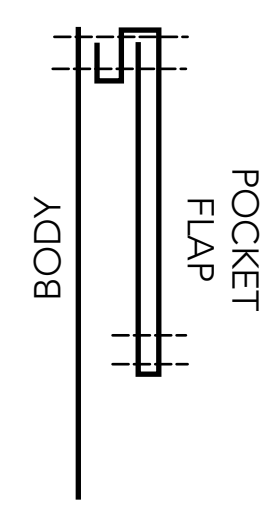
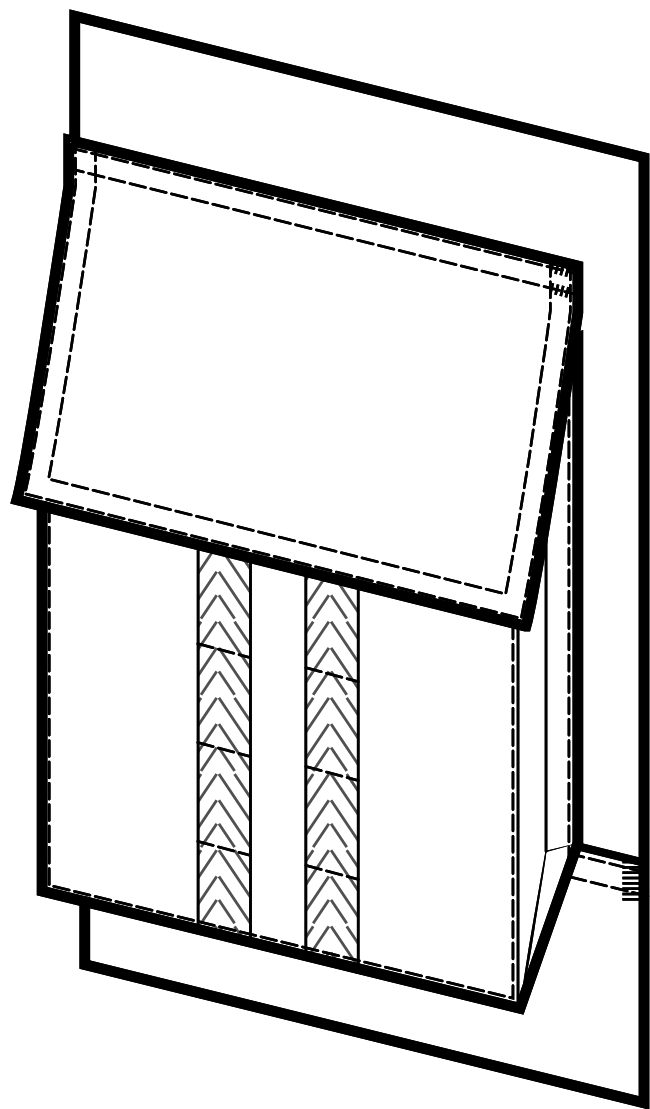


POCKET FLAP CONSTRUCTION SCHEMATIC



POCKET IS DOUBLE LINED  
FIRE RETARDANT HOOK AND LOOP  
TRIM TO BE SEWN ON THE INSIDE

LOOP SIDE OF HOOK AND LOOP CLOSURE IS SEWN DOWN ON ALL SIDES ONTO THE POCKET BODY



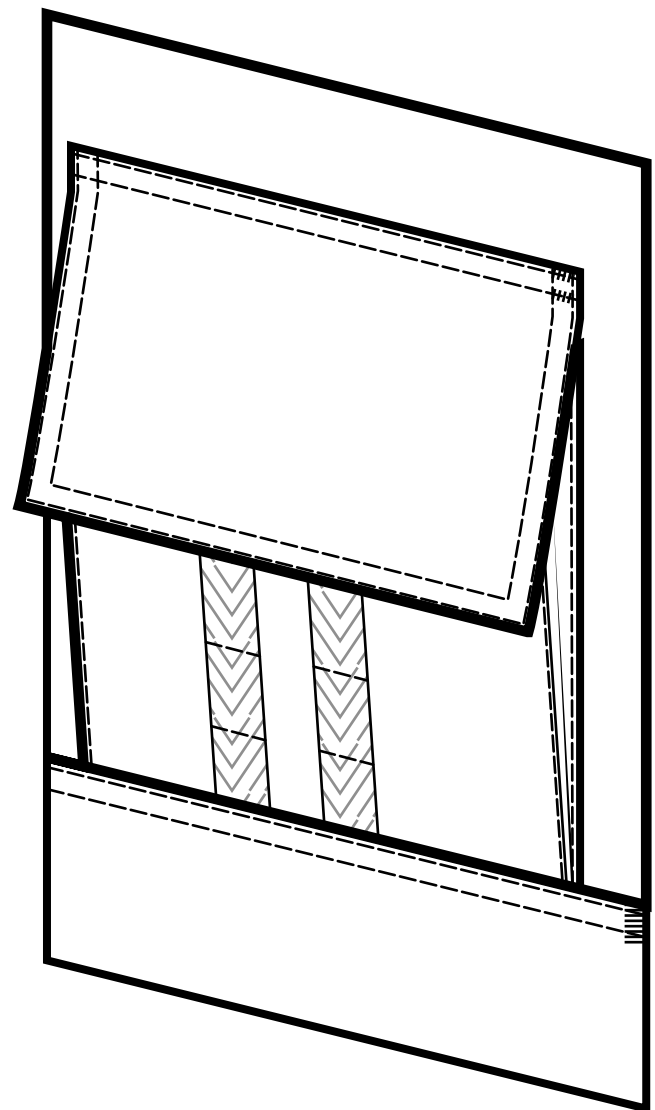
QUARTER VIEW OF POCKET PULLED OUT

BOTTOM VIEW OF THE CARGO POCKET

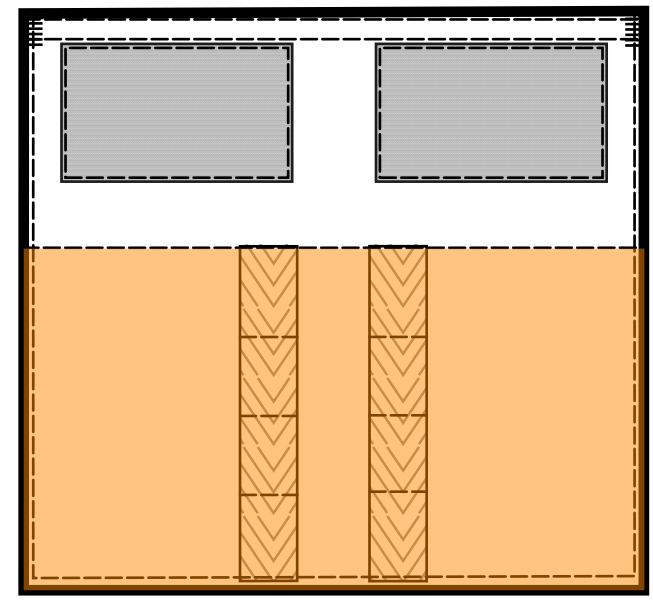


BODY

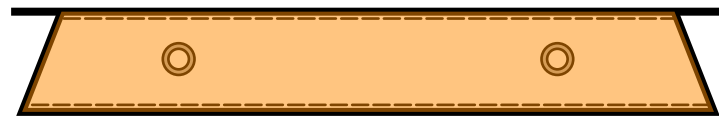
DRAINAGE CREATED BY PUNCHING IN 6MM WIDE EYELETS INTO THE BASE OF THE CARGO POCKETS



QUARTER VIEW OF POCKET INSERTED  
BACK OPEN SEAM/KNEE SEAM



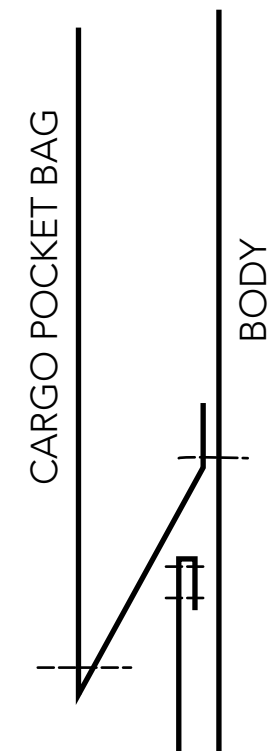
FRONT VIEW



BOTTOM VIEW OF POCKET

SELF FABRIC LAYER

SCHEMATIC SKETCH  
SIDE VIEW CARGO POCKET



CARGO POCKET BAG

BODY



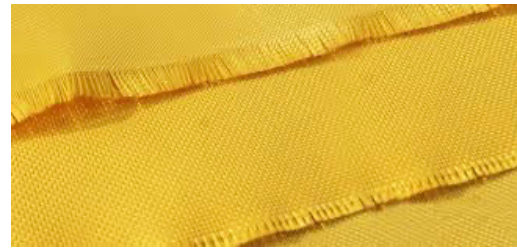
FIRE RETARDANT NOMEX® THREAD  
ALL PURPOSE SEWING



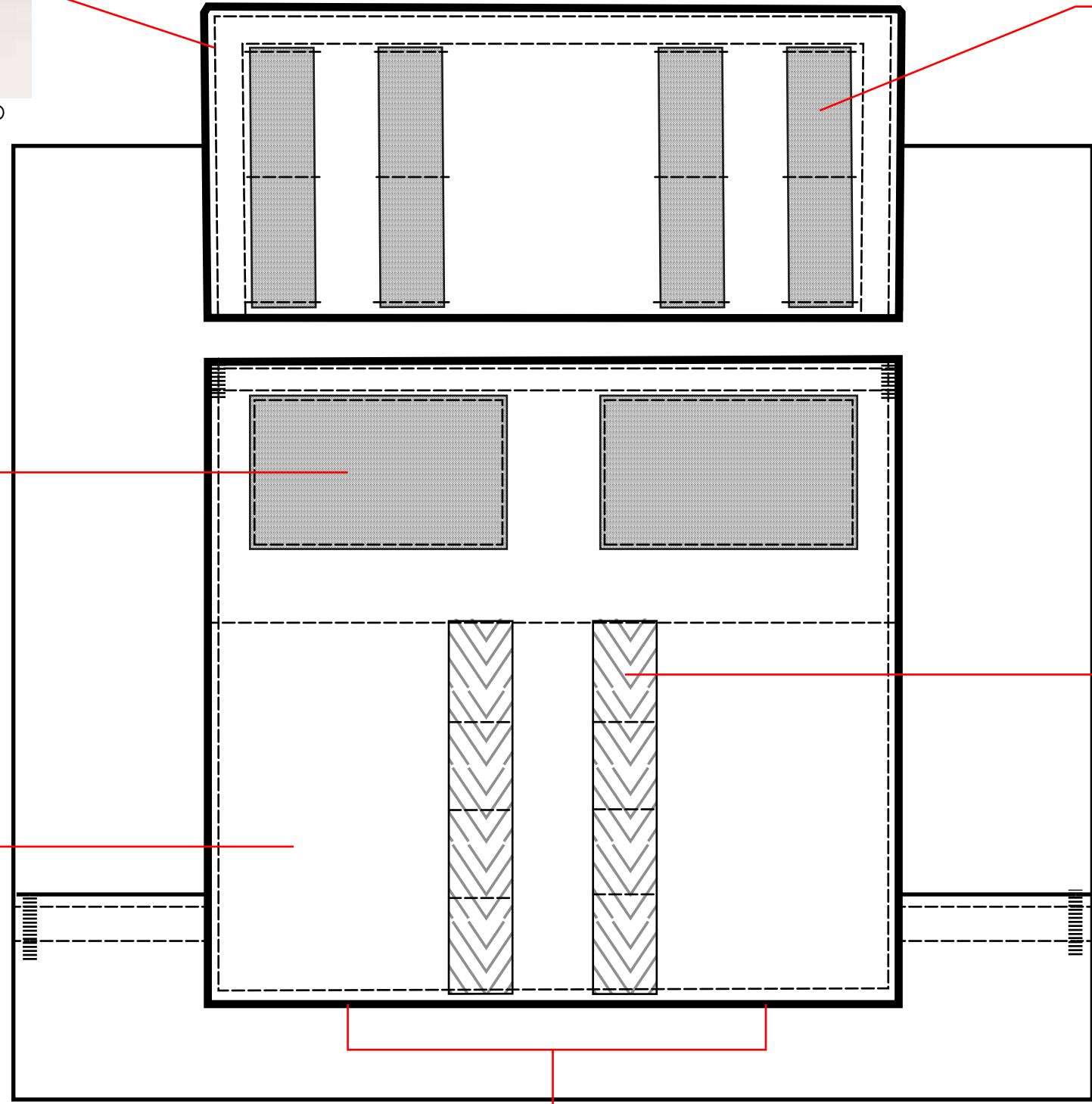
1" WIDE FIRE RETARDANT  
HOOK AND LOOP TRIM- HOOK TAPE



2" WIDE FIRE RETARDANT  
HOOK AND LOOP TRIM- LOOP TAPE



NOMEX® OUTERSHELL  
DuPONT



1" WIDE NOMEX® WEBBING



METAL EYELTS 6MM FOR  
DRAINAGE X2